



Plot 62, Hedhas Dowl, Newquay, TR8 4QD

david ball
Agencies

Plot 62 - An exciting opportunity to purchase this beautiful end-terrace, three bedroom home, at an impressive 1121sqft. Located deep within the development, this home offers a quiet space away from the main road. Boasting an enclosed rear garden, an allocated parking space with an installed EV charger, an eco-friendly air source heat pump and fully owned solar panels complete the homes. The property comprises an open plan style of living with patio doors leading out to the garden, a downstairs WC and under-stair storage cupboard complete the ground floor. Upstairs are three bedrooms comprising a master bedroom with en-suite; and built-in wardrobes for the master bedroom and bedroom two.

£337,950 Freehold

Key Features

- Open Market
- Enclosed Rear Garden
- PV Solar Panels
- EV Charger
- Principal En-Suite Bedroom
- Brand New Three Bedroom Family Home
- Allocated Parking for 1 car
- Eco-Friendly Air Source Heat Pump
- Underfloor Heating to ground floor
- Completion Q3 2026

The Development

Treveth, a Cornish developer established in 2019, is committed to creating high-quality homes and sustainable communities that address local housing needs. As a Certified B Corporation (B Corp), Treveth upholds the highest standards of social and environmental performance, accountability, and transparency, reinforcing their dedication to responsible development. Their Hedhas Dowr development in Trevemper, Newquay, features 96 thoughtfully designed homes, including one and two-bedroom flats and two to four-bedroom houses, catering to individuals, couples, and families. Offering a range of tenures, such as shared ownership, affordable rent, open market rent, and social housing, the development ensures accessibility and flexibility for a diverse range of residents. Treveth also retains the estate management and other tenures to ensure estates are continually maintained to high standards, fostering a sense of community and long-term sustainability. Designed with a focus on quality, sustainability, and harmony with the surrounding Cornish landscape, Hedhas Dowr reflects Treveth's mission to create practical, attractive homes and foster thriving communities.





Location

This impressive estate is located just a stone's throw away from the famous Gannel Estuary, and provides convenient access to an array of shops and facilities nearby, including the popular Prow Park industrial estate, known for its boutique, street food style takeaway's and businesses. Positioned just 1.5 miles from Newquay's vibrant town centre, you'll have easy access to stunning beaches, picturesque walking trails, and a range of local amenities, including shops, cafes, and schools. Treveemper also benefits from fantastic transport links, making it easy to stay connected. Regular bus routes provide access to nearby towns and villages, while Newquay Railway Station is just a short distance away, offering connections to the wider rail network via the Atlantic Coast Line. For those travelling further afield, Newquay Airport is only 5 miles away, providing both domestic and international flight options.

Specification

Download our brochure for the full specification

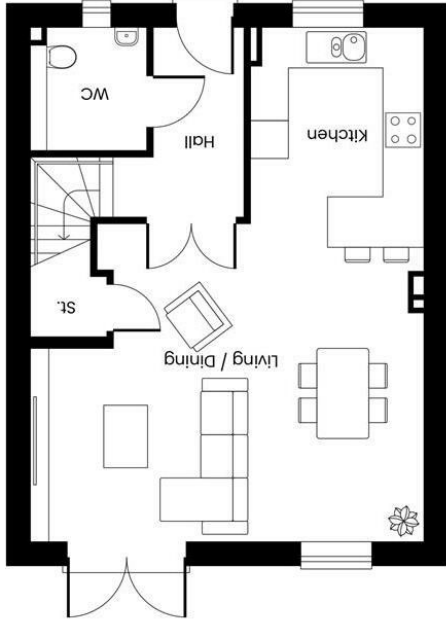
Estate Fee

£250pa

Agents Note

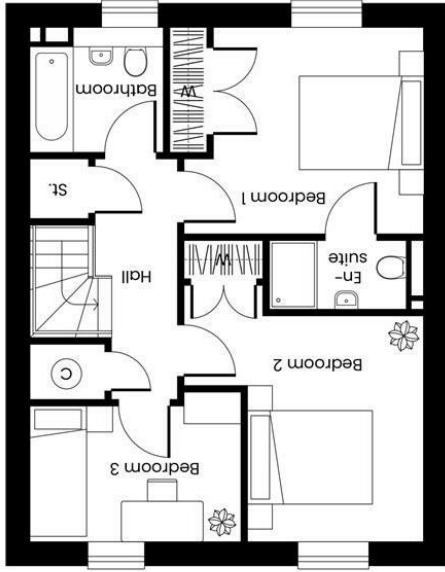
**Furniture not included in the sale

3 BEDROOM HOUSE - HT12



GROUND FLOOR

Kitchen 2.78m x 3.05m (9'1" x 10'")
 Living / Dining 6.27m x 5.13m (20'6" x 16'9")
 WC 1.86m x 1.98m (6'1" x 6'5")



FIRST FLOOR

Bedroom 1 3.32m x 3.30m (10'10" x 10'9")
 Bedroom 2 2.77m x 3.63m (9'1" x 11'0")
 Bedroom 3 3.39m x 2.41m (11'1" x 7'10")
 Bathroom 2.15m x 2.00m (7'0" x 6'6")
 En-suite 2.20m x 1.10m (7'2" x 3'7")

GIA 104.2m² (1121sqft)

david ball
 Agencies

01637
 850850

www.davidballagencies.co.uk



Connecting People to Property Perfectly

e.sales@dba.estate
 34 East Street, Newquay, Cornwall TR7 1BH

Energy Efficiency Rating	
Current	Potential
Very energy efficient - lower running costs	
A (82-91)	A (82-91)
B (69-81)	B (69-81)
C (55-68)	C (55-68)
D (39-54)	D (39-54)
E (21-38)	E (21-38)
F (1-20)	F (1-20)
G (1-20)	G (1-20)
Not energy efficient - higher running costs	
England & Wales	
EU Directive 2002/91/EC	

1. Particulars: these particulars are not an offer or contract nor part of one. You should not rely on statements by David Ball Agencies (DBA) in the particulars or by word of mouth or in writing as being factually accurate about the property, its condition or value. Neither DBA nor any joint agent has any authority to make any representation about the property or development and accordingly any information given is entirely without responsibility in the part of the agents, sellers or lessors. 2. Images paragraphs and other information: any computer generated images, plans, drawings, accommodation schedules, specifications details or other information provided about the property ("information") are indicative only. Any such information may change at any time and must not be relied upon as being factually accurate about the property. Any photographs are indicative of the quality and style of the development and do not represent the actual fitting and furnishing at this development. 3. Regulations: any reference to alterations to the property or use of any part of the development is not a statement that any necessary planning, building regulations or other consents has been obtained. These matters must be verified by an intending purchaser. 4. Fixtures and fittings: supplied services and appliances have not been tested by the vendor agent. Prospective purchasers are advised to make their own enquiries. 5. All dimensions are approximate.